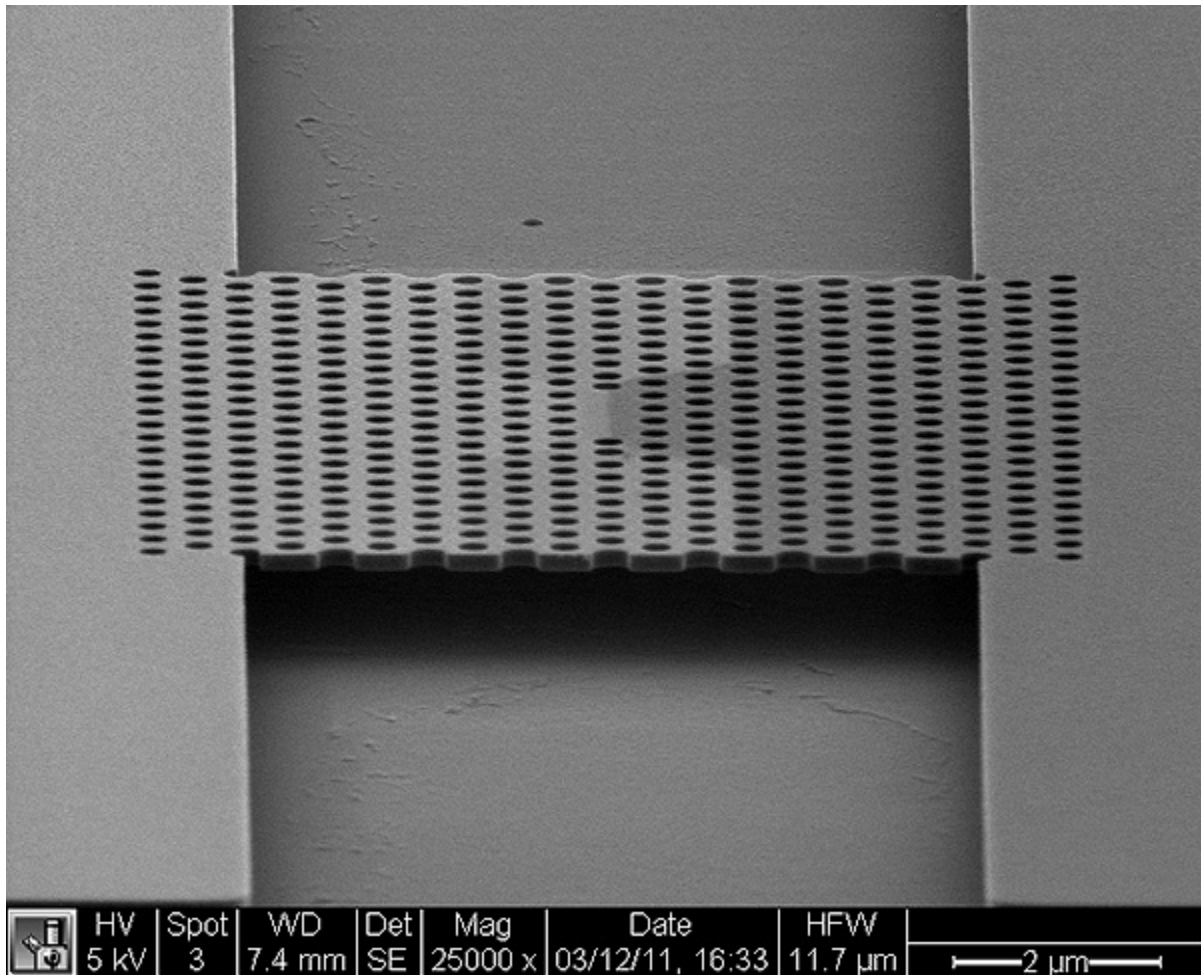


# **An integrable, electrically pumped photonic crystal nanocavity**

Stanford researchers have patented a design for electronically pumping photonic crystal membrane nanocavities using a lateral p-i-n junction. The p-i-n junction can be defined by any number of methods, including ion implantation, regrowth, or diffusion doping. The junction is designed to direct current flow into the nanocavity region, which acts as a 'hall of mirrors to reflect photons back toward the center of the laser.' As a result, the device operates more efficiently, at a lower threshold voltage and higher speed. This technique is compatible with arbitrary photonic crystal designs, and any photonic crystal device that uses a nanocavity, including:

- electrically pumped photonic crystal LED's or lasers
- electrically driven photonic crystal electro-optic devices such as modulators or splitters
- controllably charging a quantum dot in a photonic crystal cavity



### **SEM of photonic crystal nanocavity** Image courtesy of Jelena Vuckovic

This easy to fabricate technology facilitates high-volume manufacturing of photonic devices, as well as integrating photonic circuits, complex photonic chips, and high-performance biomedical sensors.

### **Stage of Development - Prototype**

Researchers in the Nanoscale and Quantum Photonics Lab have demonstrated an electrically pumped laser that is both easy to manufacture and delivers dramatically reduced energy consumption.

## **Applications**

- Photonic integrated circuits used in small-scale, low latency, high-bandwidth information processing

- Photonic networks / optical communication system devices (e.g. modulators, splitters, detectors, etc.)
- Quantum computing, quantum dot charging
- LEDs, lasers
- Solar cells
- Biomedical sensors.

## Advantages

- Higher speed, lower voltage threshold, and more efficient.
- Monolithic integration of all optical components interconnected to form an optoelectronic circuit.
- Small, easy to fabricate, and integrable with other photonic devices.
- Versatile technique is compatible with all membrane photonic crystal designs

## Publications

- Ellis, Bryan, Jelena Vuckovic, and Ilya Fushman. "[Practical electrically pumped photonic crystal nanocavity](#)." U.S. Patent 8,471,352, issued June 25, 2013.
- Ellis, Bryan, Tomas Sarmiento, Marie Mayer, Bingyang Zhang, James Harris, Eugene Haller, and Jelena Vuckovic. "[Electrically pumped photonic crystal nanocavity light sources using a laterally doped pin junction](#)." Applied Physics Letters 96, no. 18 (2010): 181103. <https://doi.org/10.1063/1.3425663>
- Ellis, Bryan, Marie A. Mayer, Gary Shambat, Tomas Sarmiento, James Harris, Eugene E. Haller, and Jelena Vučković. "[Ultralow-threshold electrically pumped quantum-dot photonic-crystal nanocavity laser](#)." Nature photonics 5, no. 5 (2011): 297-300. <https://doi.org/10.1038/nphoton.2011.51>
- Perlman, David. "[Stanford develops super-fast computer device](#)." SFGate.com, San Francisco Chronicle, 16 Nov 2011.
- Myers, Andrew. "[Light and Magic: Stanford engineers create a tiny, energy-efficient laser for optical communication systems](#)." news.stanford.edu, Stanford Report, May 16, 2011.

## Patents

- Published Application: [20110248242](#)
- Issued: [8,471,352 \(USA\)](#)

## **Innovators**

- Jelena Vuckovic
- Ilya Fushman
- Bryan Ellis

## **Licensing Contact**

### **Luis Mejia**

Senior Licensing Manager, Physical Sciences

[Email](#)